

Bare Escentuals Eye Looks

Created by
Amy (AmyBEGirl)

Collected into this document by Lisa (lcundiff)

(for her own personal convenience, but to share, of course)



Above photo is a look from the big BE catalog. Soft Focus Pure all over, Pond (NOT foiled) on the lid and blended up, Twilight and Liberty to wetline.

Au Natural, Bali, Bamboo, 1990



Banana Smoothie, Amazing Amanda, Bahamas, Beach Goddess



Bikini, Beautiful Lisa, Bare Skin, Black Emerald



Blush, Beautiful Autumn, Bliss, Blue Dream, Blueberry



Bikini Beach, Bloom, Black Pearl



Butterfly, Brass Roots, Brilliant, Black Ruby



Bikini Beach, Passionate Plum, Chameleon, Sugar Plum



1960, Angel, Aquamarine



2000, 1970, Antique Pearl, Azure



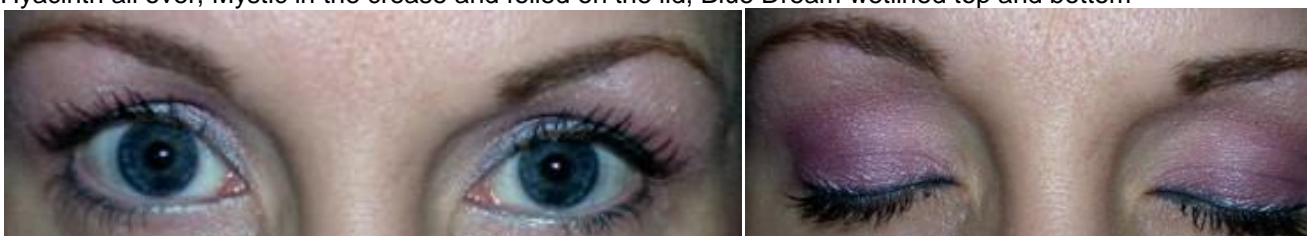
Ensenada colors – Lime, Cerveza, Salsa, Cruisin' Teddi



Rebirth, Sugar Plum, Catwoman, Stones light, and leftover Lime



Hyacinth all over, Mystic in the crease and foiled on the lid, Blue Dream wetlined top and bottom



Firelight all over, Fire Opal in the crease with Wildflower over it, Fire Opal foiled on the lid, Gracious wetlined on bottom, Gracious mixed with Green Tea wetlined on top



Girlfriend Michelle all over, Pond in the crease, Envy foiled on the lid, Pond wetlined on bottom, Pond mixed with Live wetlined on top



Lemonade all over, Salsa in the crease and foiled on the lid, Cerveza thickly wetlined on top, Ocean thinly wetlined on top, Cruisin' Teddi wetlined on bottom



Bikini all over, Wildflower in the crease, Girlfriend Michelle foiled on the lid, Ocean wetlined on top, Ocean mixed with Liberty wetlined on bottom.



White Gold all over, Cerveza in the crease, fatline of Cruisin Teddi, wetlined with Lime, then added a dusting of Teddi and Lime under the crease



Girlfriend Michelle all over, Cruisin' Teddi in the crease and foiled on the lid, thick line of Cerveza on top, wetlined with Masquerade, a little extra Cerveza under the crease



Ice Queen all over, Salsa in the crease, Girlfriend Michelle foiled on the lid, Salsa thicklined on top, Imagination wetlined top and bottom



Impression all over, Wonder in the crease, Enchanting foiled on the lid, Wonder and Impression mixed and wetlined on the bottom, then Visualize mixed into that and wetlined on top, Ecstasy on the brow, and 2000 patted over that



Ecstasy all over and foiled on the lid, Angel in the crease, Beach Goddess wetlined.



Base of City Lights applied wet, dried and buffed, Gold Leaf all over and foiled on the lid, Vine in the crease, Humor wetlined top and bottom



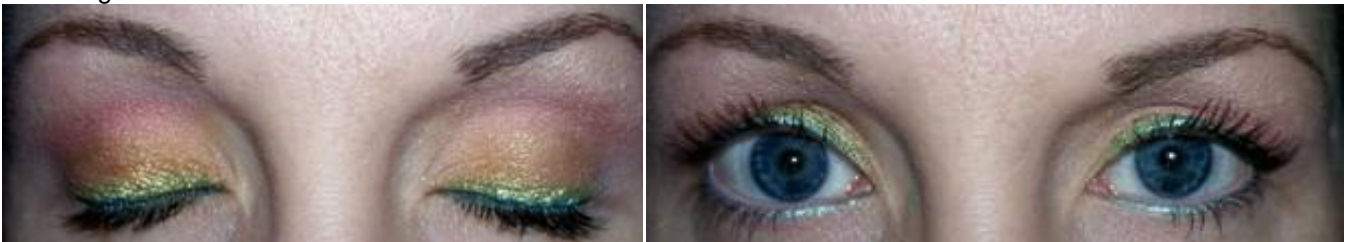
Free Spirit lightly all over, Ecstasy over that, Free Spirit in the crease and foiled on the lid, Liberty wetlined top and bottom.



Lemonade all over, Azure in the crease, Girlfriend Kathleen foiled on the lid, Azure wetlined on bottom, Denim mixed in with that and wetlined on top



Cerveza all over, Salsa in the crease, Cerveza foiled on the lid, Lime "fatlined" on top, Cruisin' Teddi wetlined, a little bit of Hugs on the brow



City Lights all over and then Sincerely Angela over that, Radiant Rebecca in the crease and foiled on the lid, Incense wetlined top and bottom



Hyacinth all over, Sincerely Renee in the crease, Fantasy, 1990 wetlined top and bottom.



City Lights all over and then Winter White over that, Fun in the crease, Beautiful Autumn foiled on the lid, Rio wetlined top and bottom



Hot Spot all over, Sincerely Renee in the crease and foiled on the lid, Intuition wetlined top and bottom



Lemonade all over and a little Playful on the brow, Wildflower in the crease, Mint foiled on the lid, Chameleon wetlined.... Then I foiled Lime over the Mint



Sun Goddess all over, a mix in the crease (I think it was Blush Pearl and Flowers), Coconut Palm foiled on the lid, Socialite wetlined.



Girlfriend Michelle all over, Wildflower in the crease and foiled on the lid, Masquerade wetlined.



Girlfriend Michelle all over, Halo in the crease and foiled on the lid, fat line of Blue Moon on top, Lime wetline



Sunshine all over, Camp in the crease and foiled on the lid, wetlined with Bark/Good Fortune.



City Lights foiled all over as a base. Desire very lightly in the crease and wetlined with Firefly



Firelight all over, Fire Opal in the crease (very lightly), True Gold foiled on the lid, Blue Dream wetlined.



Bikini Beach all over, Angel in the crease and foiled on the lid, Magnetize "fatlined" on top, Tortoise wetlined on top, then mixed with Magnetize and wetlined on bottom



Girlfriend Michelle all over and foiled on the lid, Wildflower in the crease, Liberty wetlined.



Devotion foiled on the lid to above the crease, Gal Pal foiled on the brow and then those buffed to blend, Rio wetlined



City Lights all over, Merlot in the crease, Grace foiled on the lid, Merlot wetlined.



Sun Goddess added over all



Went back and added Hope in the crease



Hot Spot all over, Giggle in the crease and foiled on the lid, Visualize wetlined on the bottom then Blue Ball mixed in that and wetlined on top.



Hyacinth all over, Passionate Plum in the crease, Heart foiled on the lid, Sugar Plum wetline



Sincerely Angela all over, Passion in the crease and foiled on the lid, Celery wetlined on bottom, Tortoise mixed in with that and wetlined on top



Firelight all over, Gold Leaf on lid and up into crease, Envy foiled on inner 1/3 of lid, Soiree foiled on outer 2/3 of lid, Black Emerald wetlined



Banana all over, Ginger Peach in the crease and foiled on the lid, Twilight wetlined.



Mango all over, Ginger Peach in the crease, Banana foiled on the lid and then a little more over that, Coconut Palm wetlined



Mango all over, Paradise in the crease, Firelight foiled on the lid, Rio wetlined on top, then mixed with a little bit of Nude Beach and wetlined on bottom.



Skinny Dip all over, Ginger Peach foiled on the lid, Wildflower in the crease, Denim and Azure mixed and wetlined



Au Natural all over, Tan Lines in the crease, In The Buff foiled on the lid, Liberty wetlined on bottom, Imagination mixed into that and wetlined on top



Winter White all over, Hope in the crease, Drama foiled on the lid, Catwoman wetlined on top, Humor wetlined on bottom.



2000 all over then Ice Queen on the brow, Masquerade in the crease, Sterling Silver foiled on the lid, Catwoman wetlined top and bottom very thinly, and then Masquerade over that. More 2000 all over.



Au Natural all over, Desire in the crease and foiled on the lid, Masquerade wetlined.



Bikini Beach all over, Lime in the crease and foiled on the lid, Denim wetlined.....and a little Ecstasy under the brow.



Demure all over, Pacific Heights on the lid, Passionate Plum in the crease, Myth wetlined.



Sincerely Angela all over, Mermaid in the crease, Pink Sands foiled on the lid, Mermaid wetline



Winter White all over, Fun in the crease, Bahamas foiled on the lid, Mermaid wetlined.



Paradise all over, Coconut Palm in the crease, Mai Tai foiled on the lid, Purrfect wetlined.



Nude Beach all over, Pamper in the crease and foiled on the lid, Rio wetlined.



Demure all over, Passionate Plum in the crease, Cultured Pearl foiled on the lid, Girlfriend Tina wetlined



Joy all over, Heart in the crease and foiled on the lid, Socialite wetlined on bottom and Humor mixed into that and wetlined on top. Then I went over Joy with Playful, and then Sun Goddess---to lighten it up.



Ice Queen all over, Salsa in the crease and foiled on the lid, Gracious wetlined on bottom and Green Tea mixed into that and wetlined on top.



Firelight all over, Amazing Amanda in the crease, Ginger Peach foiled on the lid, Sugar Plum wetlined on top, Devotion wetlined on bottom



Lemon Zinger all over, Frolic in the crease, Bahamas foiled on the lid, Chameleon wetlined



Free Spirit all over, Angel in the crease, Enchanting foiled on the lid, Liberty wetlined on bottom and Imagination mixed into that and wetlined on top



GF Michelle all over and foiled on the lid, Devotion in the crease and wetlined.



Ecstasy all over, Pass. Plum in the crease, Hyacinth foiled on the lid, Exotic Tara wetlined



Banana Smoothie all over, Ginger Peach Smoothie in the crease and foiled on the lid, Incense wetlined



Same as above but I added Wildflower in the crease and more liner. Loving the Incense!



Nude Beach all over, Grace in the crease and foiled on the lid, Q. Tiffany wetlined.



Firelight all over, Barry M. 003 in the crease and foiled on the lid (Thank you Suzanne!! Liberty wetlined on the bottom and then Dragonfly mixed into that and wetlined on top.



Pink Sands mix all over, Pink Posey/Grace (1:1) in the crease and foiled on the lid, Blue Dream wetlined



Mango all over, Ginger Peach in the crease, Banana foiled on the lid, Girlfriend Tina wetlined.



Nude Beach all over, P. Plum in the crease, Kudos mix foiled on the lid, Celery and Tortoise wetlined.



Take Me all over (haha), Wildflower in the crease and foiled on the lid, Twilight wetlined.



Serene all over, Barry M in the crease, Magnetize foiled on the lid, Live wetlined.



Sincerely Angela all over, Hope in the crease, Desire foiled on the lid, Humor wetlined.



Seashell all over, Bare Skin in the crease and foiled on the lid, Mod wetlined and then Liberty over that.



Winter White all over, Bubbly in the crease and foiled on the lid, Masquerade wetlined.



Sunshine all over, Bare Skin in the crease, Queen Linda foiled on the lid, Kudos/Soiree wetlined. (I think I might have used gold mascara that day.)



Free Spirit all over, Angel in the crease, Chardonnay foiled on the lid, Intuition wetlined.



White Gold all over, Gold Dipped foiled on lid, Vine on outer 1/3 of lid, Green Tea and Blue Ball mixed to wetline.



Gold Leaf all over, Radiant Rebecca in the crease, Finesse foiled on the lid, Loli wetlined.



Cultured Pearl all over, Bloom in the crease, Antique Pearl foiled on the lid, Purrfect wetlined



Free Spirit all over, Angel in the crease, Lime foiled on lid, Merlot wetline



Whisper all over, Girlfriend Margo in the crease and foiled on the lid, Celery wetlined



Cultured Pearl all over, Hope in the crease, Cultured Pearl foiled on the lid, Chameleon and Blue Ball mixed to wetline.



Girlfriend Michelle all over, Passionate Plum in the crease, Blue Dream wetlined, Sapphire Luminous Lashes



Sun Goddess all over, Citrus Twist in the crease and foiled on the lid, Soiree wetlined.



WildCat all over, Pacific Heights in the crease, Queen Marie foiled on the lid, Celery wetlined on bottom, Tortoise mixed in and wetlined on top



WildCat all over, Hope in the crease, Desire foiled on the lid, Dragonfly wetlined.



WildCat all over, Bali in the crease and foiled on the lid, Rio wetlined.



WildCat all over, Hope in the crease, WildCat foiled on the lid, Humor wetlined.



Nude Beach all over, Celestine in the crease and foiled on the lid, Drama wetlined.



Lemonade all over, Wildflower in the crease and foiled on the lid, Visualize wetlined.



Playful all over, Giggle in the crease, Seashell foiled on the lid and buffed lightly, Lime wetlined on bottom, Purrfect mixed in and wetlined on top



Firelight all over, Wildflower in the crease, Cerveza foiled on the lid, Wicked wetlined



Bare Gold TSV colors



Free Spirit, Mystic, Gold Mine



Wildcat, Mai Tai, Tan Lines, Catwoman, Fling



2000, 1970, 1990



Cultured Pearl, Beautiful Autumn, Catwoman



Bubbly, Bali, Blue Ball/Blue Dream



Bikini Beach, Black Pearl, Bamboo/Black Emerald



Bikini, Bloom, Blue Moon, Bluety Call



Ready to Wear



Down To Earth



Chardonnay, Celestine, Celery



Venus, Soft Focus Tweed, Cocoa, Root



City Lights, Cerveza, Chameleon, Climbing Ivy



Demure, Citrus Twist, Coconut Palm



Ecstasy, Desire, Cruisin' Teddi, Denim



Nude Beach all over, Passionate Plum in the crease, Grace foiled on the lid, Celery wetlined.



Bikini all over, Gal Pal in the crease, Reveal foiled on the lid and buffed, Beach Goddess wetlined.



Sincerely Angela all over, In The Buff in the crease and foiled on the lid, Visualize wetlined.



Hot Spot all over, Passionate Plum in the crease, Queen Marie foiled on the lid, Climbing Ivy wetlined on bottom and Live mixed in and wetlined on top.



Au Natural, Antique Pearl, Amazing Amanda, Aquamarine



Banana Smoothie, Angel, Azure



Bahamas, Bare Skin, Beach Goddess



Finesse, Devotion, Envy, Dragonfly



Firelight, Enchanting, Faith/Blue Black, Drama



Exquisite, Fire Opal, Festive, Exotic Tara



Firelight all over, Fire Opal in the crease and foiled on the lid, Beach Goddess wetlined on bottom then Rio mixed in with that and wetlined on top.



Gilded Taupe, Fantasy, Fling



Ginger Peach, Fantasy Island, Firefly



Free Spirit, Girlfriend Kathleen, Girlfriend Margo, Girlfriend Tina



Girlfriend Michelle, Frolic, Flirtatious, Golden Earth



Hot Spot, Gal Pal, Gracious



Hugs, Hope, Ginger Peach, Green Tea



Grace, Heart, Gold Dipped, Humor



In The Buff, Hiking Trail, Intuition



Hyacinth, Kudos, Imagination



Ice Queen, Mai Tai, Joy, Incense



Impression, Karaoke (a hard one to foil), Jade



Invitation, Mango Smoothie, Liberty



Lemonade, Merlot, Lime, Live



Neptune, Mystery, Loli



Ready to Wear, Venus, Live



Ready to Wear, Neptune, Rio



Ready to Wear, Sun Goddess, Masquerade



Nude Beach, Passionate Plum, Mystic, Magnetize, Masquerade



Playful, Brass Roots, In A Jam



Pink Sands, Passion, Mermaid



Hyacinth, Flamenco, Grass



Meet The Greens, Mod



Pure Joy, Loyalty, Purrfect



Queen Phyllis, Pinot Noir, Precious, Oz



Seashell, Ponder, Pacific Heights, Myth



Reveal, Pamper, Nice Pear, Purrfect



Soft Focus Dune, Paradise, Pebble, Rio



Soft Focus Linen, Radiant Rebecca, Queen Linda, Queen Tiffany



Serene, Real Deal, Queen Marie, Root



Snowflake, Rose Pearl, Platinum, Sugar Plum



Skinny Dip, Salsa, Soft Focus Tweed, Socialite



Meet The Plums, Sublime



Sunshine, Fun, Trophy Wife, TLC



Winter White, Shantung, Bon Bon



Sincerely Angela, Sun, Summer, Soft Focus Velour



Soul, True Gold, Morocco, Tortoise



Trust, Wildflower, Vine, Twilight



Venus, Wonder, Champagne, Twilight Platinum



Meet The Nuts



Meet The Stones



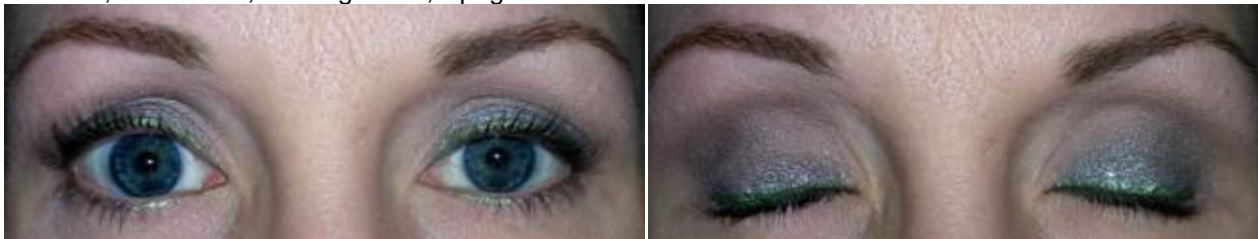
Starlet Karen, Soft Focus Tweed, Sincerely Renee, Soiree



Sun Goddess, The Gift, Tan Lines, Treasured Terri



Take Me, Soul Sister, Sterling Silver, Spright



Chenille, Good Fortune, Cupcake, Visualize



Wildcat, Bliss, Wicked



White Gold, Brilliant, Lemon Zinger, Spirited



Whisper, Face Fashion colors (Blue Hue, Metallic Green, French Navy)



Meet The Blues, Patio Party



Soft Focus Style, Chic, and Savvy, w/ Twig



Butterfly, Beautiful Lisa, Meow, Grape



Discovery, Sangria, Tiger's Eye



Stunner, Glamorista



Jazz, Present, Blueberry



Whisper all over, The Gift in the crease, Thank You foiled on the lid, Spright wetlined on top, Wicked wetlined on bottom



Nice Pear all over then Playful over that, Bluety Call in the crease, Nice Pear foiled on the lid, Bluety Call wetlined on bottom, Blue Ball mixed into that and wetlined on top



Foiled In A Jam all over the lid and into the crease, then foiled Ecstasy above the crease, did a kind of cat eye with Catwoman using the SB brow brush and so I used what was left on my brows.



Trust all over, Grace foiled on the lid, Hope in the crease, Humor wetlined. Thought I'd try these (minus Now liner) since they were in the new kit.

